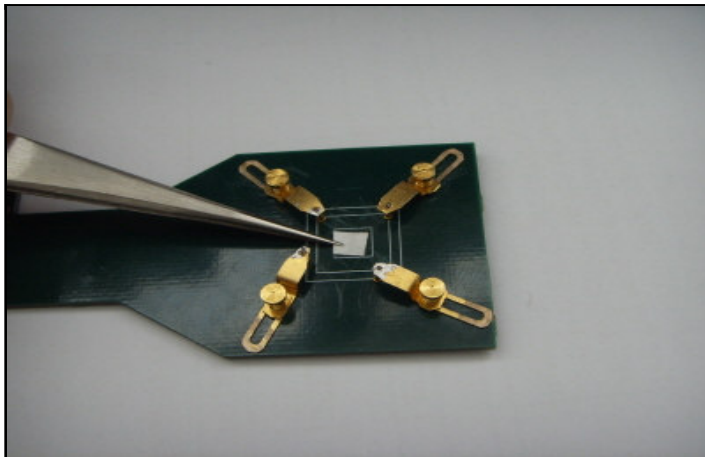
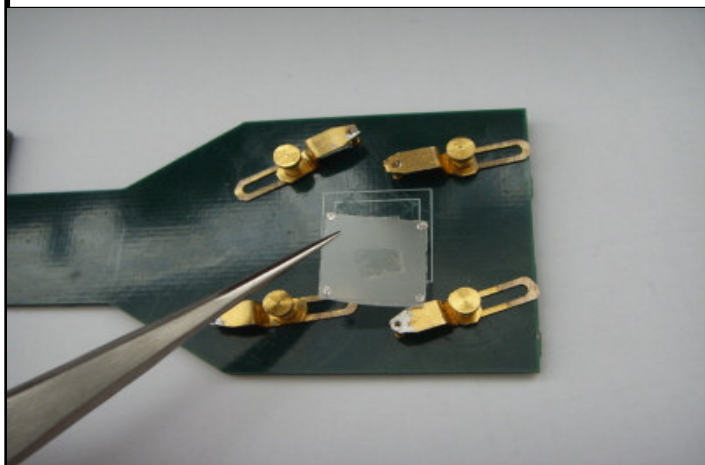


## NEW CLIP TYPE SAMPLE BOARD (1)



Above all, put the “double sticky tape” on the center of PCB board, with using tweezers.

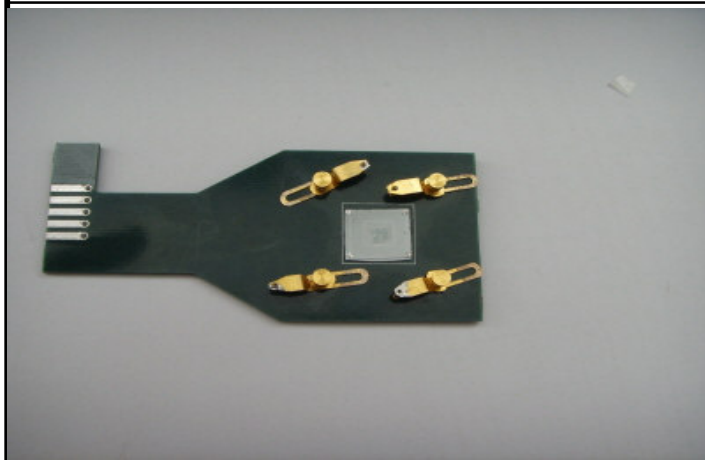
It will help the PCB hold sample.



And, then put the sample onto the center of PCB board.

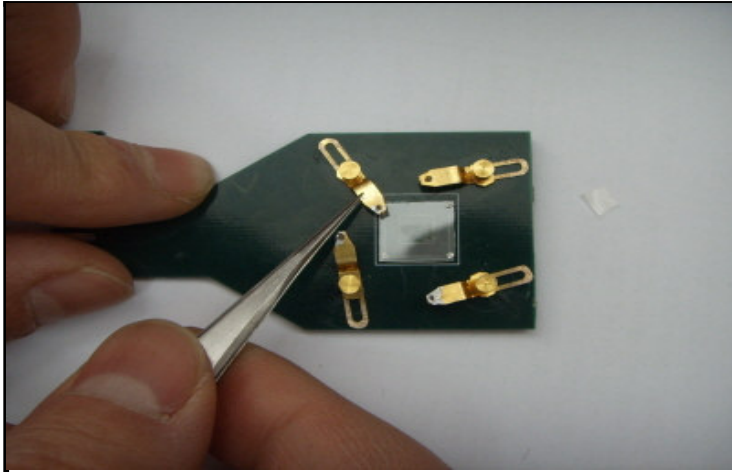
At this time, soldering on four point edge must be done in advance.

However, for some sample, it is possible to measure without soldering.



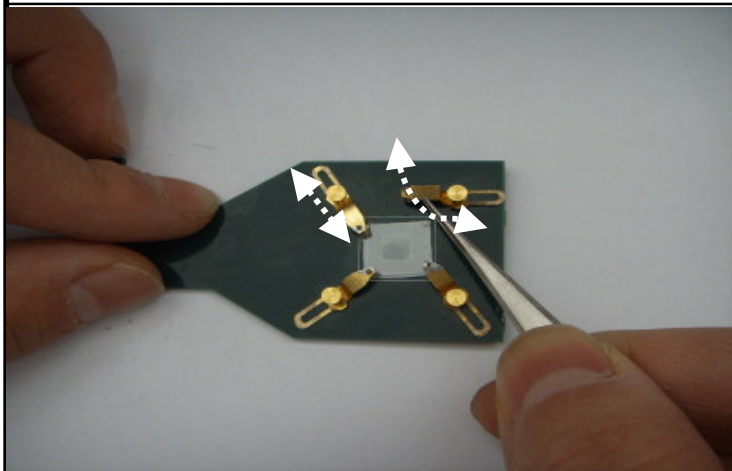
Sample was correctly on board on the center of PCB board as shown.

## NEW CLIP TYPE SAMPLE BOARD (2)



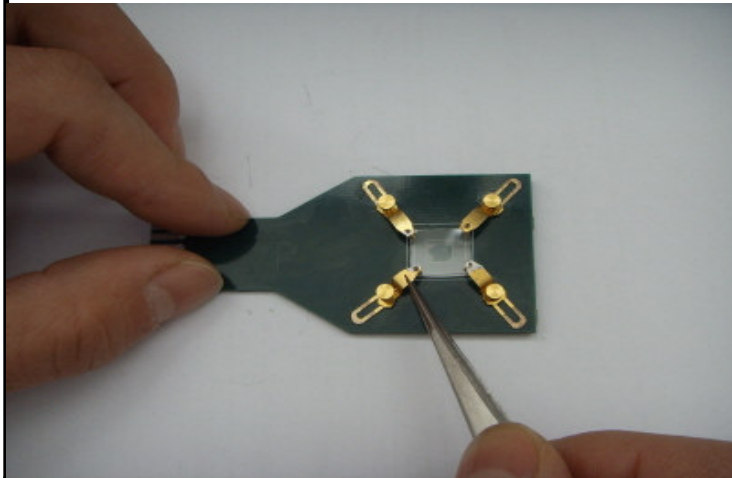
Lift clip and move onto the soldered point.

And, at this time, pogo pin will soften the impact on sample.



As explained above, pls go ahead 4 point edge at all.

At this time, clip is freely moved up& down, left& right, forward & backward.



It was finished as shown.

It is all ready to measure.